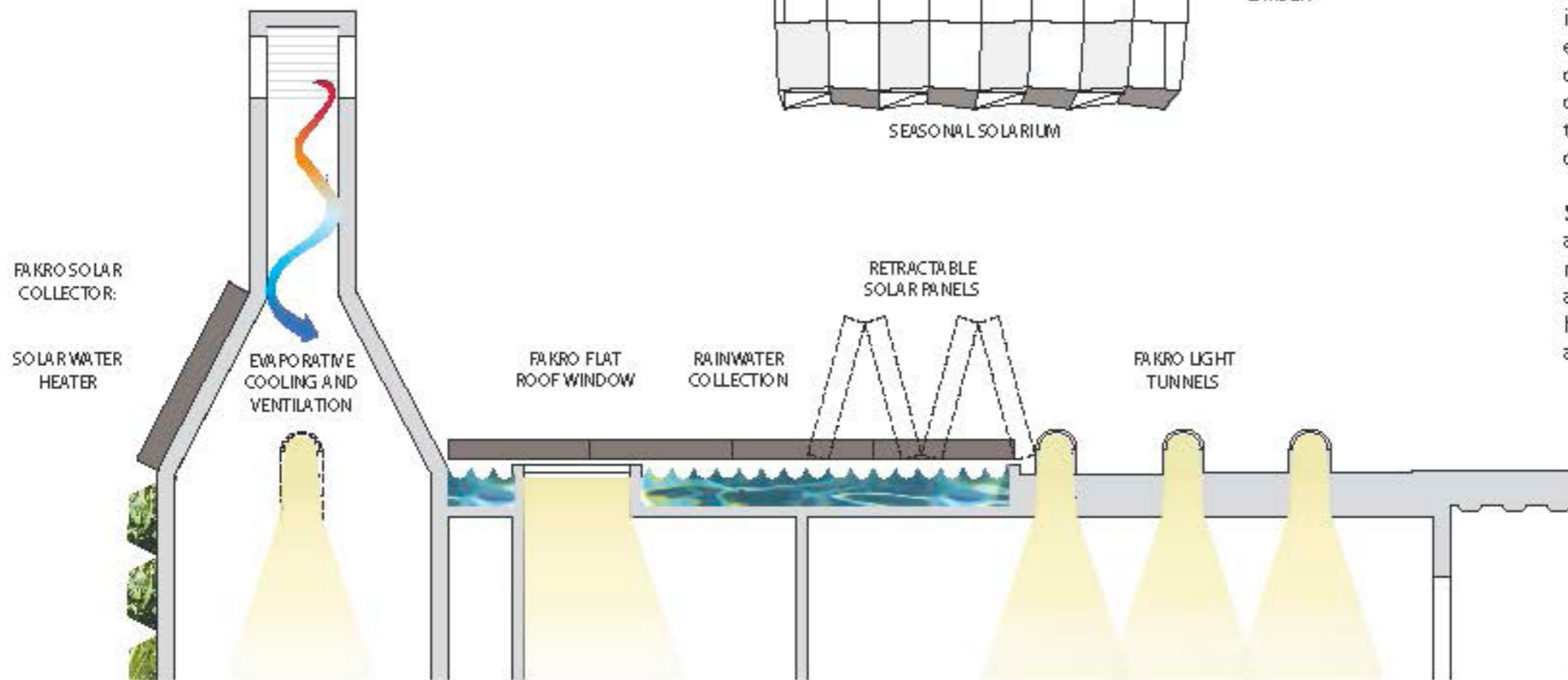
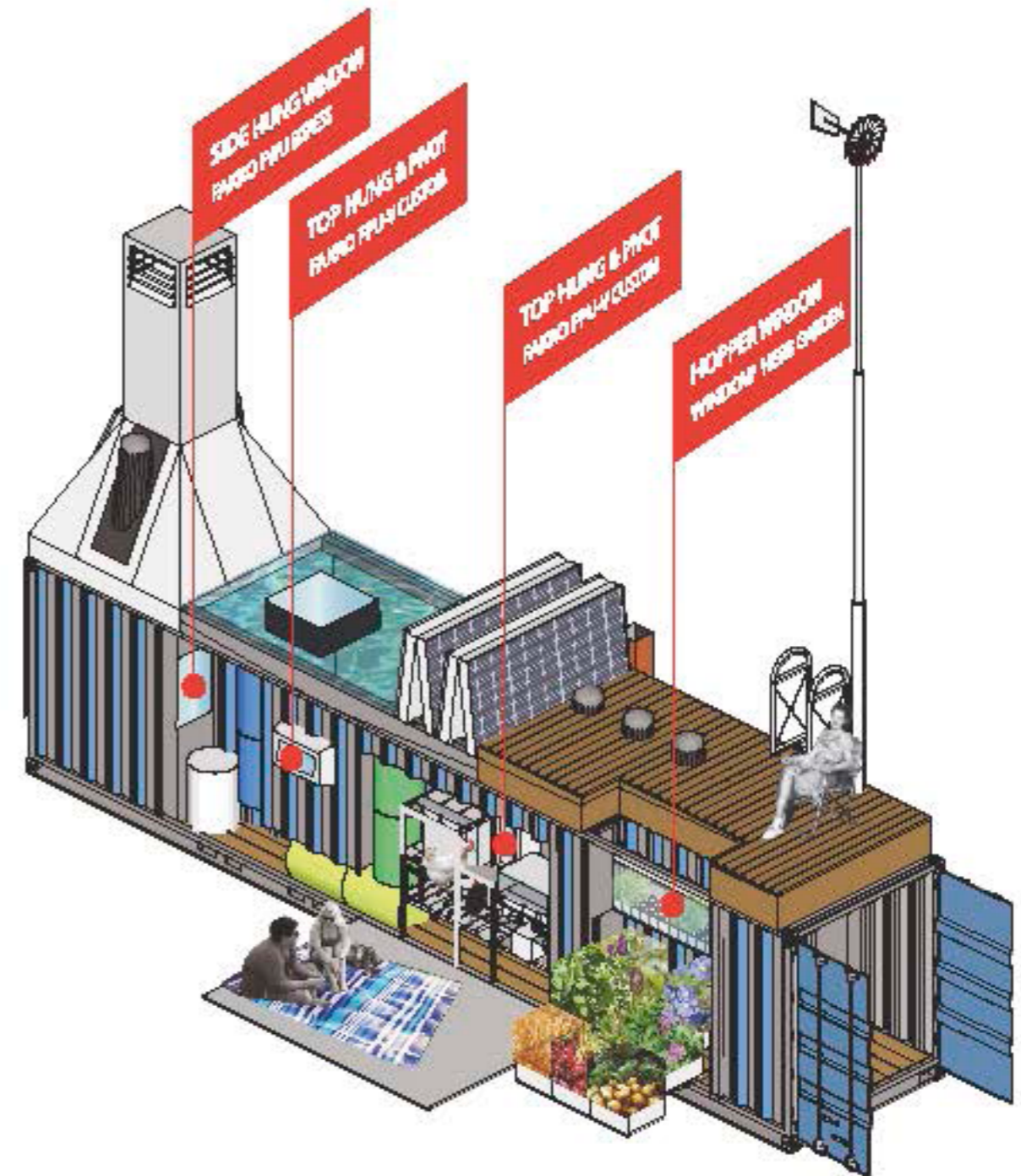
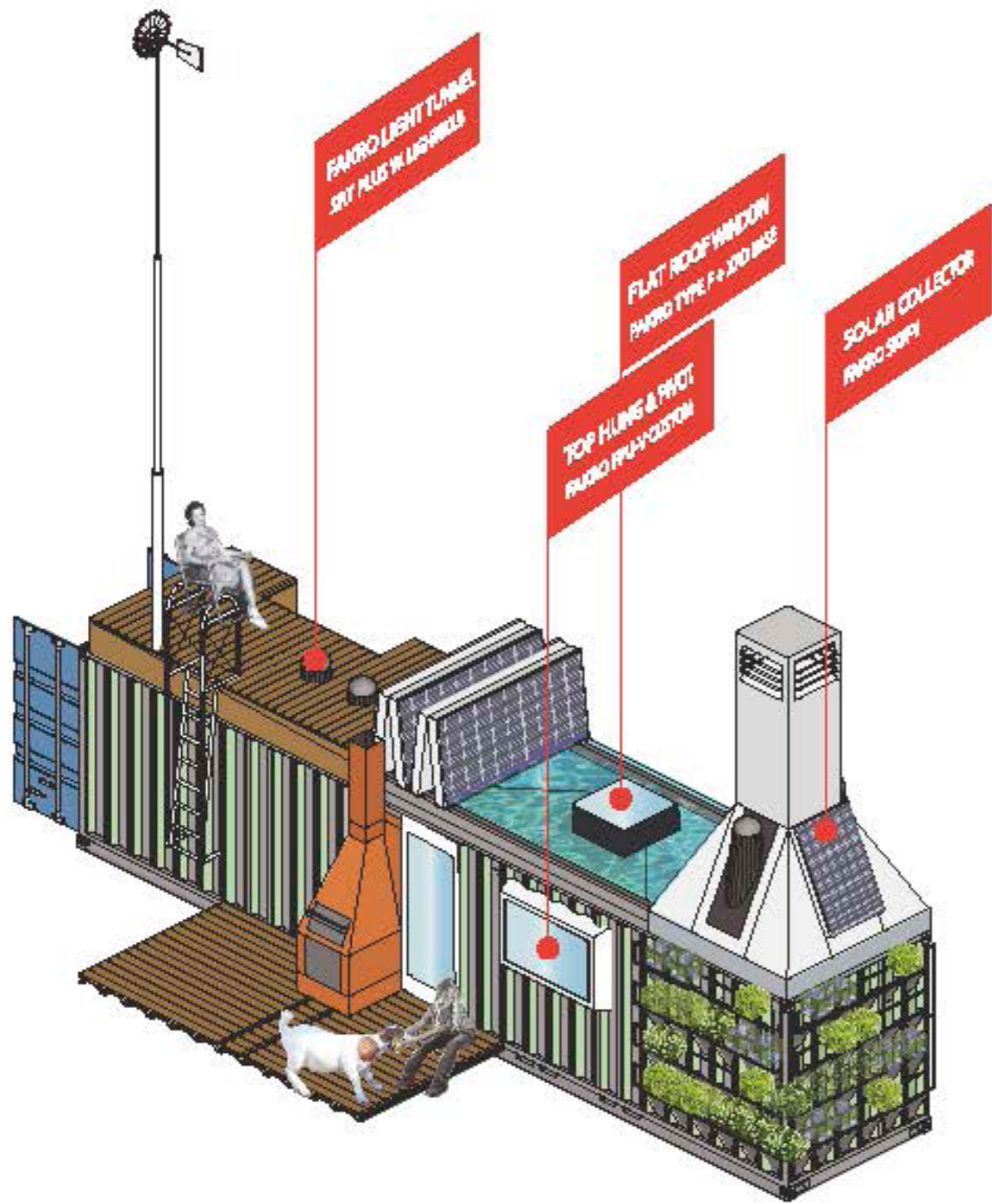


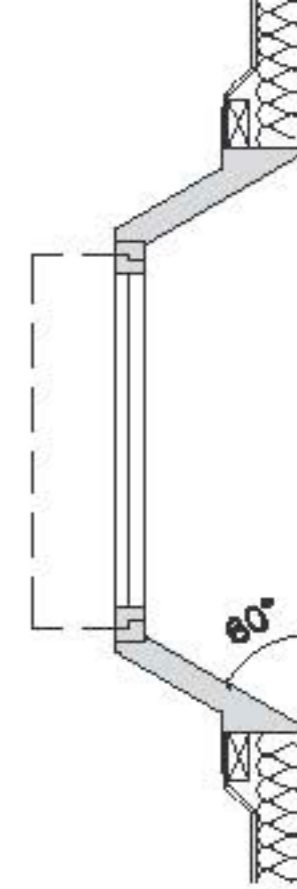
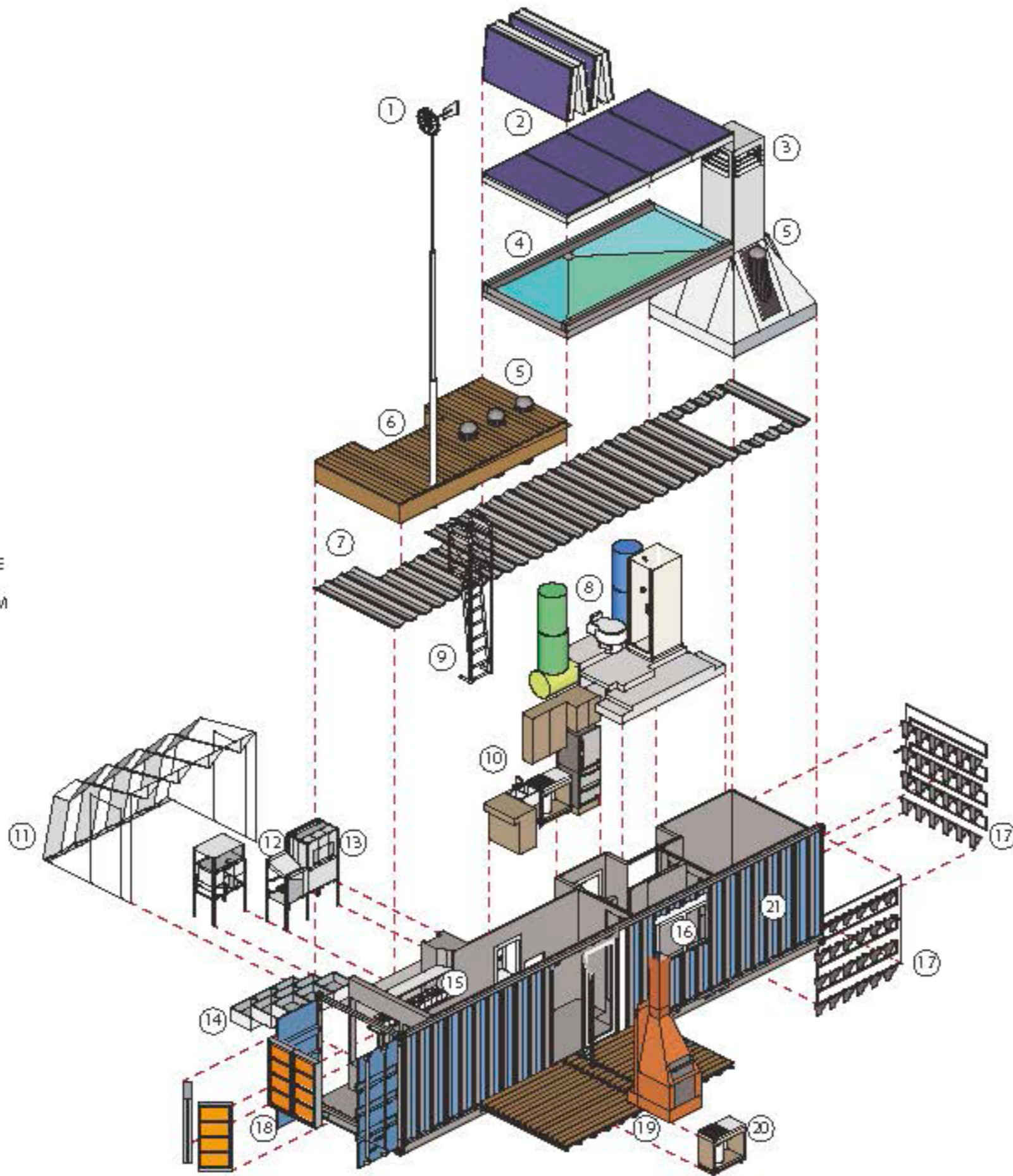
PLAN (ABOVE): Fakro high performance windows are the key to making the building envelope airtight and well insulated. Fakro operable windows and electronic controls allow for optimized control of cross ventilation and thermal comfort. Additionally, rainwater collection, thermal mass, and localized microclimates contribute to temperature moderation.



SECTION (BELOW): Fakro light tunnels and a Fakro roof window supply the microhome with natural light. Light bulbs are installed within the light tunnels which harness power from the wind to provide ample lighting at all times.

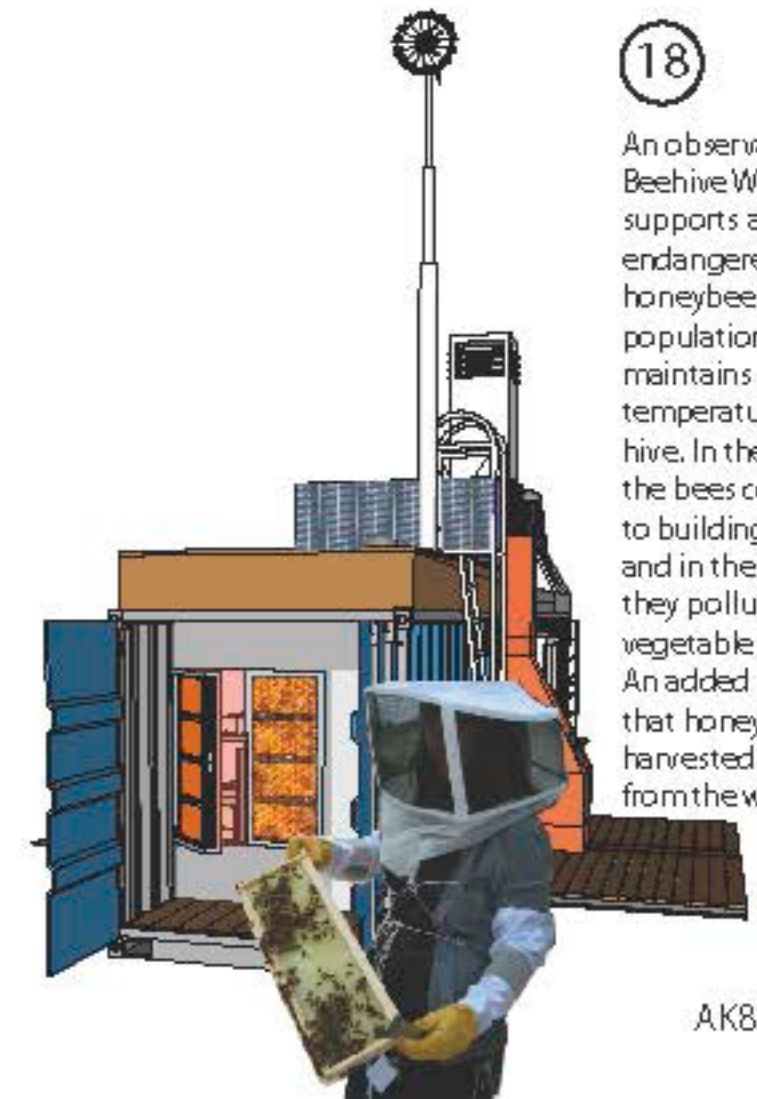


- ① WIND POWER
- ② SOLAR COLLECTORS
- ③ EVAPORATIVE COOLING TOWER
- ④ ROOFTOP POND
- ⑤ FAKRO LIGHT TUNNELS
- ⑥ ROOFTOP DECK
- ⑦ CONTAINER ROOF
- ⑧ WATER REUSE SYSTEM
- ⑨ ROOFTOP ACCESS
- ⑩ KITCHEN
- ⑪ COLLAPSIBLE SOLARIUM
- ⑫ CHICKEN COOP
- ⑬ EGG ACCESS WINDOW IN KITCHEN
- ⑭ GARDEN BOXES
- ⑮ WINDOW HERB GARDEN
- ⑯ FAKRO WINDOWS IN SPLAYED FRAME
- ⑰ PLANTED WALLS & WATERING SYSTEM
- ⑱ OBSERVATION BEE HIVE WINDOW
- ⑲ FIREPLACE/ OVEN
- ⑳ PROPANE GAS STOVE
- ㉑ 40' SHIPPING CONTAINER



16

A 60° splayed window pocket distributes natural light up to 10X the size of the window. The splayed pocket is also designed to hold the Fakro windows in a detachable component



18

An observation Beehive Window supports an endangered honeybee population which maintains a constant temperature in the hive. In the winter, the bees contribute to building heat, and in the summer they pollinate the vegetable garden. An added bonus is that honey can be harvested directly from the window.