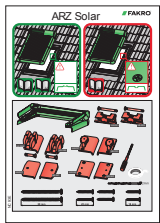


SZYBKI START ROLETY ARZ SOLAR

Pilot ZWP S8 jest dostarczony w jednym opakowaniu z roletą.
Roleta jest fabrycznie zaprogramowana do pilota na kanale nr 1 !!!



Zamontuj roletę według instrukcji montażu NC93E

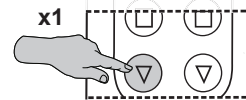


Upewnij się, że włącznik główny rolety znajduje się w pozycji 1

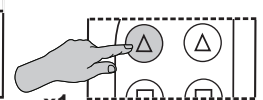


Wyciągnij pasek foliowy w celu odblokowania baterii w pilocie.

Sprawdź działanie rozwijania rolety



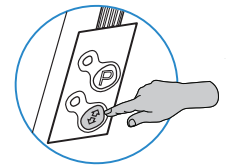
Sprawdź działanie zwijania rolety



Informacje dotyczące programowania, zmiany parametrów, zmiany ustawień konfiguracyjnych, wywoływanie poszczególnych funkcji zawarte są w **Instrukcji Programowania i Użytkownika (indeks NC97C)**.

Roleta wyposażona jest w **przycisk sterowania manualnego** umieszczony w jej górnej części. Umożliwia on sterowanie roletą w przypadku utraty pilota lub wyczerpania jego baterii. Jeśli po zamontowaniu rolety nie można jej uruchomić z pilota, sprawdź działanie z **przycisku sterowania manualnego**.

Jeśli roleta działa z przycisku sterowania manualnego, a mimo tego nie można jej uruchomić z pilota wykonaj **RESET** i przejdź do **PROGRAMOWANIA** !!!

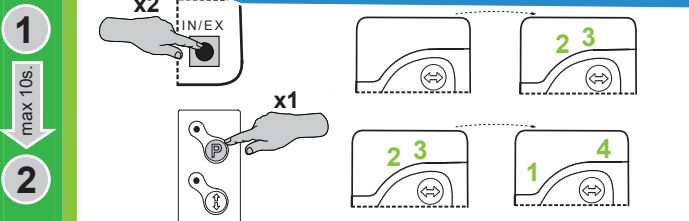


RESET

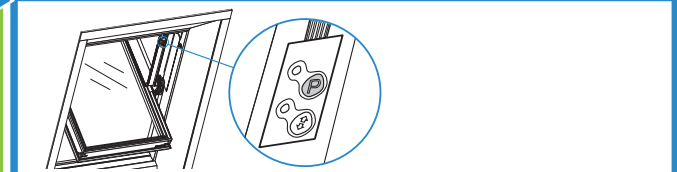
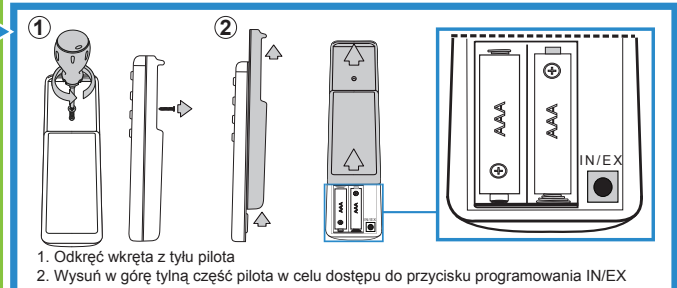
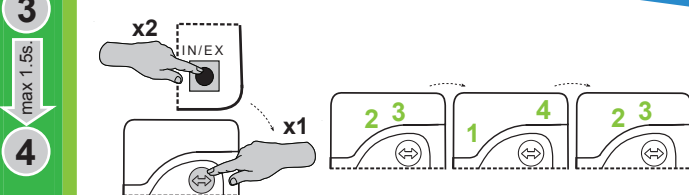
SYGNALIZOWANIE

INFORMACJE DODATKOWE

RESET ROLETY



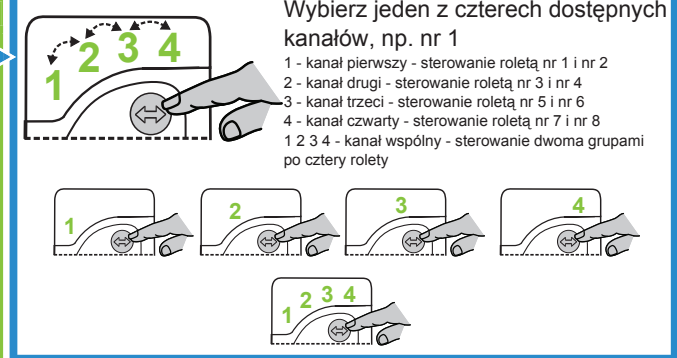
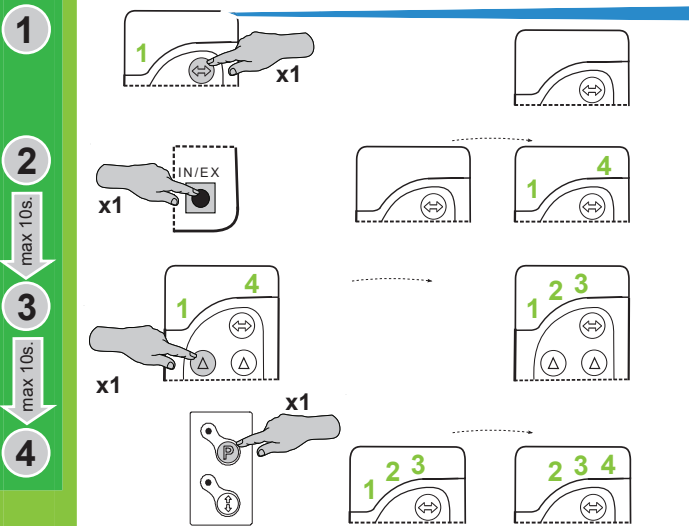
RESET PILOTA



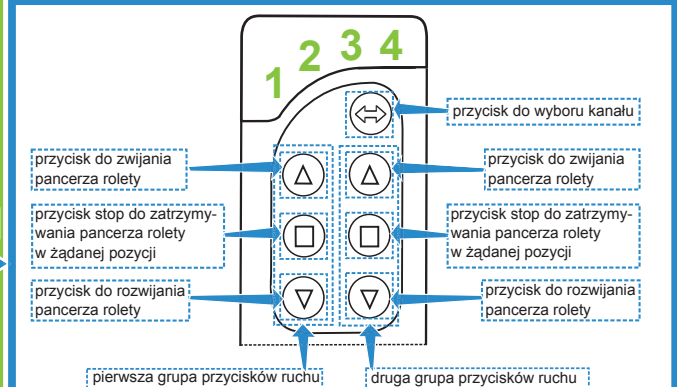
PROGRAMOWANIE

SYGNALIZOWANIE

INFORMACJE DODATKOWE



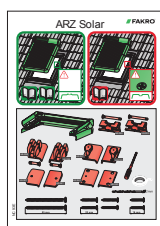
STEROWANIE



Wywoływanie innych procedur, tj. DELETE, EXCLUDE, LEARN MODE, POWIĄZANIE URZĄDZEŃ opisane jest w instrukcji programowania i użytkownika dołączonej do rolety ARZ Solar. Informacji jak przeprowadzać programowanie urządzeń Z-Wave przy pomocy pilotów innych producentów należy szukać w instrukcjach tych urządzeń.

QUICK START OF ARZ SOLAR ROLLER SHUTTER

ZWP S8 remote control is supplied in one packaging with the roller shutter
 The roller shutter is factory programmed on channel No. 1 !!!



Install the roller shutter in accordance with installation instructions of NC93E

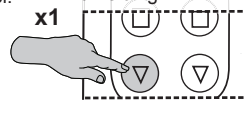


Make sure that the main switch of the roller shutter is set to channel No.1

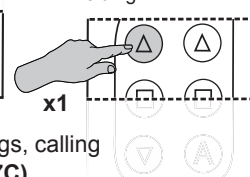


Remove foil strip to unlock the batteries in the remote control.

Check the operation of the roller shutter unfolding.

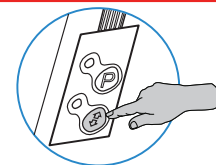


Check the operation of the roller shutter folding.



Information concerning programming, change of parameters, changes in configuration settings, calling individual functions is contained in the **Programming and Usage Instructions (code NC97C)**.

The roller shutter is equipped with the **manual operating button** positioned in its upper part. It enables control of the roller shutter in case of losing the remote control or wearing off its batteries. If after mounting the roller shutter cannot be launched via the remote control, check operation from the **manual operating button**.

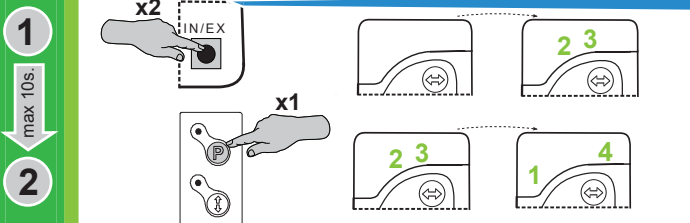


If the roller shutter works from the manual operating button, and yet it cannot be launched via remote control, make **RESET** and go to **PROGRAMMING** !!!

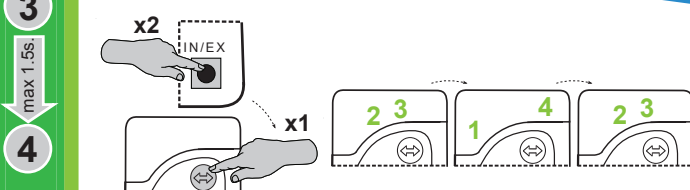
RESET

SIGNALLING

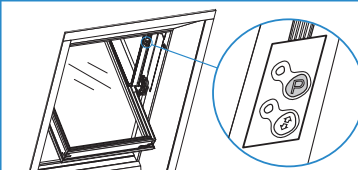
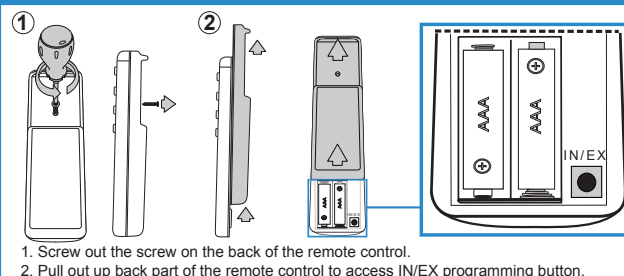
RESET OF THE ROLLER SHUTTER



RESET OF THE REMOTE CONTROL

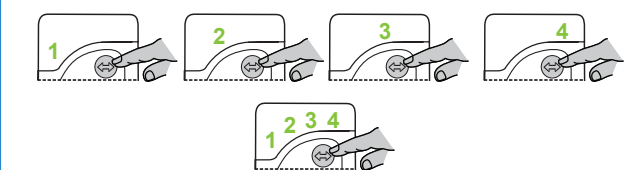
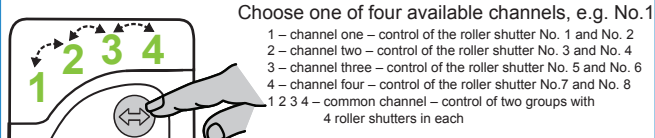
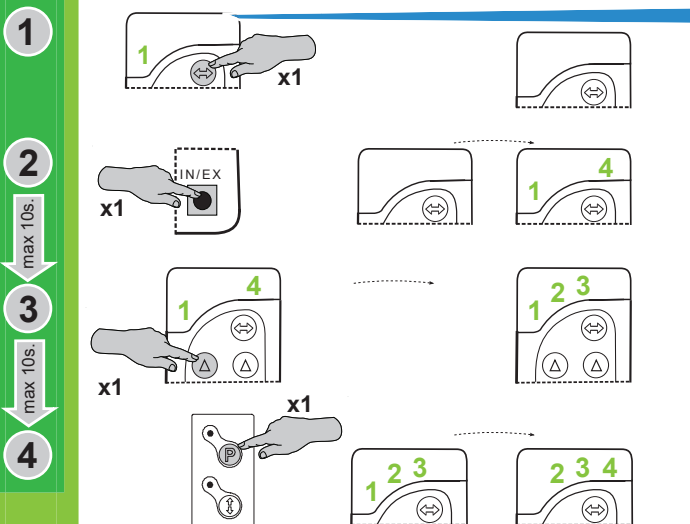


ADDITIONAL INFORMATION

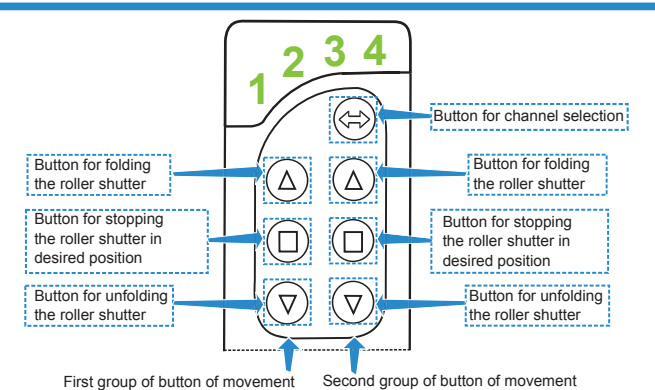
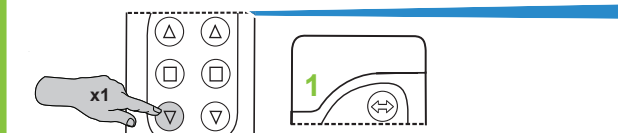


PROGRAMMING

SIGNALLING



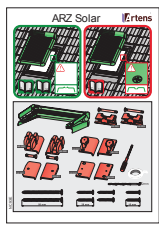
CONTROL



Calling other procedures such as DELETE, EXCLUDE, LEARN MODE, DEVICE CONNECTION is described in programming instructions attached to the ARZ Solar roller shutter. Information on how to perform programming of Z-Wave devices with the use of remote controllers of other manufacturers is to be found in the manuals of these devices.

DÉMARRAGE RAPIDE DU VOLET ARZ SOLAR

La télécommande **ZWP S8** est livrée dans le même emballage avec le volet.
Le volet est programmé d'usine avec la télécommande sur le canal n° 1!!!



Installer le volet selon l'instruction de montage NC93E.

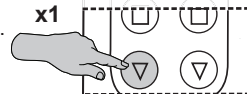


Il faut s'assurer que l'interrupteur principal du volet se trouve dans la position 1.

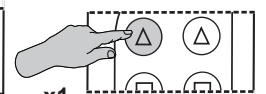


Sortir le ruban en film afin de débloquer les piles dans la télécommande.

Vérifier le déroulement du volet avec télécommande

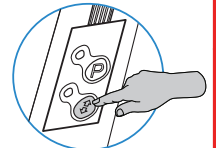


Vérifier l'enroulement du volet avec télécommande.



Les informations sur la programmation, la modification des paramètres, la modification des configurations des positions, le démarrage des fonctions données se trouvent dans **l'Instruction de Programmation et le Mode d'Emploi** (index NC97C).

Le volet est équipé en bouton de **commande manuelle** installé dans sa partie supérieure.
Il permet la commande du volet dans le cas de perte de la télécommande ou lorsque ses piles sont vides.
Si le volet installé ne démarre pas à l'aide de la télécommande, il faut vérifier le fonctionnement du bouton de **commande manuelle**.



Si le volet fonctionne à l'aide du bouton de commande manuelle et malgré cela il est impossible de le démarrer à l'aide de la télécommande, il faut passer au **RESET** et à la **PROGRAMMATION**!!!

RESET

SIGNALISATION

RESET DU VOLET

1 max 10sec. x2 IN/EX

2 x1

RESET DE LA TÉLÉCOMMANDE

3 max 1.5sec. x2 IN/EX

4 x1

PROGRAMMATION

SIGNALISATION

1 x1

2 max 10sec. x1 IN/EX

3 max 10sec. x1

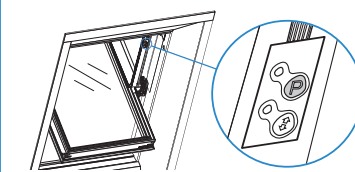
4 x1

COMMANDE

x1

INFORMATIONS SUPPLÉMENTAIRES

1. Dévisser le vis sur le dos de la télécommande.
2. Sortir vers le haut la partie arrière de la télécommande afin d'atteindre le bouton de programmation IN/EX.



Choisir un des quatre canaux disponibles par ex. n°1.

1 – le premier canal – la commande du volet n°1
2 – le deuxième canal – la commande du volet n°2
3 – le troisième canal – la commande du volet n°4
4 – le quatrième canal – la commande du volet n°4
1 2 3 4 – le canal commun – la commande des deux groupes par quatre stores.

1 2 3 4

Le bouton pour choisir le canal

Le bouton d'enroulement du capot du volet.

Le bouton d'enroulement du volet.

Le bouton de stop pour arrêter le capot du volet dans une position voulue.

Le bouton de stop pour arrêter le volet dans une position voulue.

Le bouton pour dérouler le capot du volet.

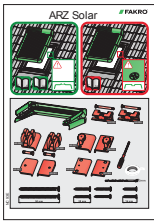
Le bouton pour dérouler le volet.

Première groupe de boutons de mouvement Deuxième groupe de boutons de mouvement

La description du démarrage d'autres procédures, à savoir DELETE, EXCLUDE, LEARN MODE, ASSEMBLAGE DES ACCESSOIRES se trouve dans l'instruction de programmation et le mode d'emploi joint au volet roulant ARZ Solar. Pour en savoir plus sur le mode de programmation des accessoires Z-Wave à l'aide des télécommandes d'autres fabricants, il faut se référer aux instructions de ces accessoires.

START VELOCE DI AVVOLGIBILE ARZ SOLAR

Il radiocomando ZWP S8 è fornito in un imballaggio con avvolgibile.
L'avvolgibile è programmato di fabbrica sul canale 1



Montate l'avvolgibile secondo istruzioni di montaggio NC93E

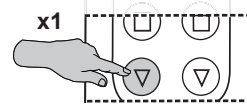


AssicurateVi che interruttore principale dell'avvolgibile si trova in posizione 1

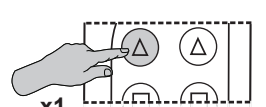


Tirate la striscia al fine di sbloccare la batteria nel radiocomando

Verificate il funzionamento di srotolamento dell'avvolgibile

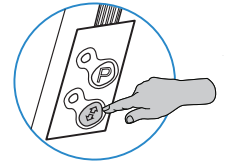


Verificate il funzionamento di arrotolamento dell'avvolgibile



Le informazioni riguardanti la programmazione, la modifica dei parametri, modifica delle impostazioni di configurazione, la chiamata delle singole funzioni incluse nell'Istruzione di Programmazione e di Uso (codice NC97C).

L'avvolgibile è dotato di pulsante di comando manuale collocato nella sua parte superiore. Consente di comandare l'avvolgibile nel caso in cui perdeti il radiocomando oppure si scaricano le sue batterie. Se dopo aver montato l'avvolgibile non si può avviarlo con radiocomando, verificate il funzionamento del pulsante di comando manuale.

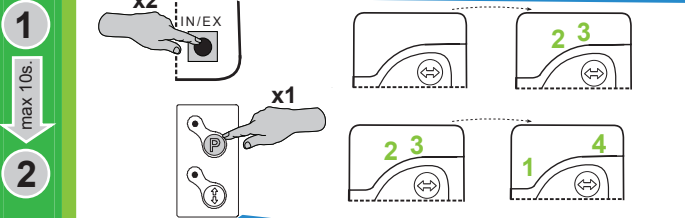


Se l'avvolgibile funziona dal pulsante di comando manuale ma tuttavia non si può avviarlo dal radiocomando effettuate **RESET** e passate alla **PROGRAMMAZIONE!**

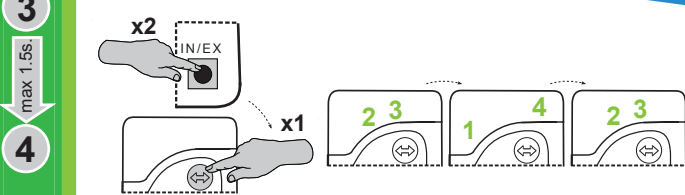
RESET

SEGNALAZIONE

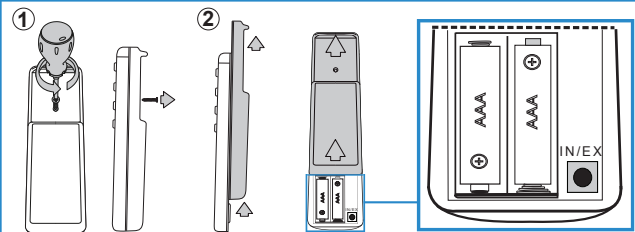
RESET DI AVVOLGIBILE



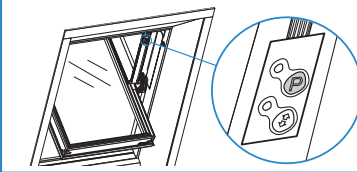
RESET DI RADIOCOMANDO



INFORMAZIONI AGGIUNTIVE

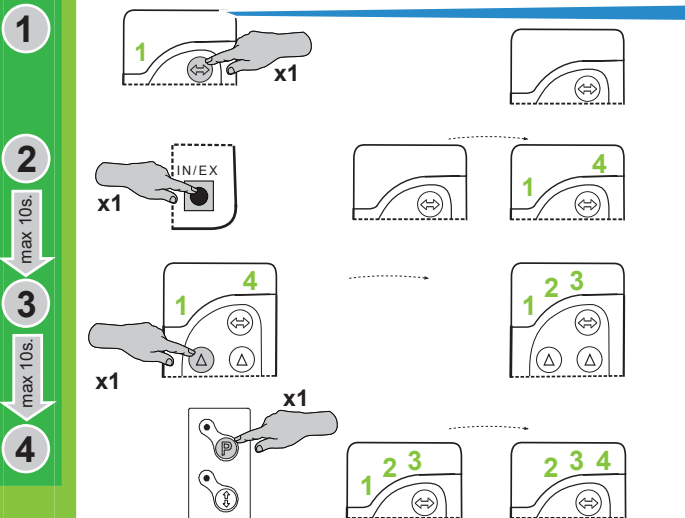


Svitare la vite da dietro del radiocomando
Sfilare la parte posteriore del radiocomando al fine di accedere al pulsante di programmazione IN/EX.

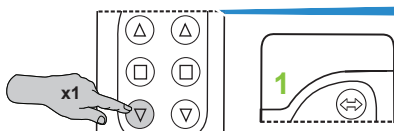


PROGRAMMAZIONE

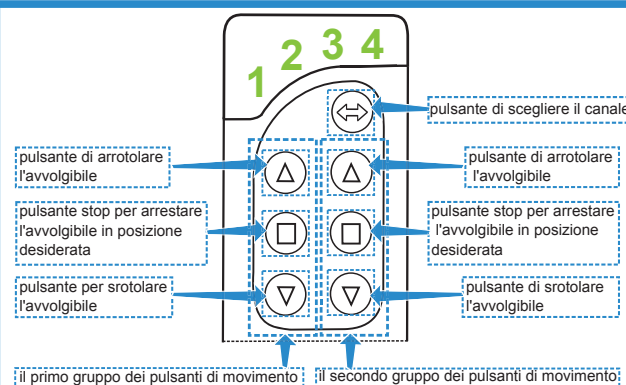
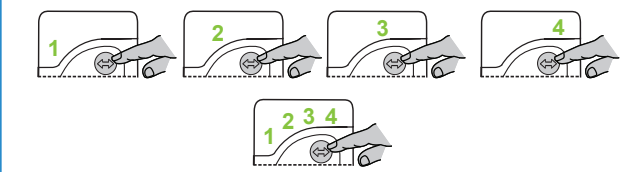
SEGNALAZIONE



COMANDO



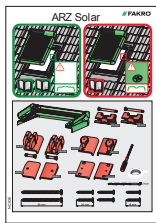
Scegliete uno dei quattro canali disponibili, p.es. Nr 1
1 – canale uno – comando di avvolgibile nr 1 e nr 2
2 – canale due – comando di avvolgibile nr 3 e nr 4
3 – canale tre – comando di avvolgibile nr 5 e nr 6
4 – canale quattro – comando di avvolgibile nr 7 e nr 8
1 2 3 4 – canale comune – comando di due gruppi da quattro avvolgibili



Chiamare altre funzioni quali DELETE, EXCLUDE, LEARN MODE, ASSOCIAZIONE DI DISPOSITIVI è descritto nell'istruzione di programmazione di uso allegata all'avvolgibile ARZ Solar. Le informazioni su come svolgere la programmazione dei dispositivi Z-Wave per mezzo di radiocomando di altri produttori vanno ricercate nelle istruzioni di questi dispositivi.

Kurzanleitung für Außenrollladen ARZ Solar

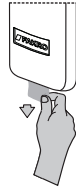
Der Außenrollladen ist werksseitig dem 1. Kanal der Fernbedienung ZWP S8 zugeordnet, die im Lieferumfang des Außenrollladens enthalten ist.



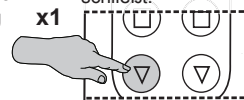
Den Außenrollladen laut Montageanweisungen einbauen (Montageanleitung Nr. NC93E).



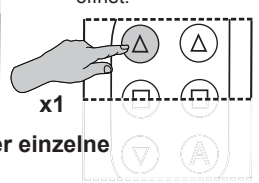
Überprüfen, ob der Hauptschalter des Außenrollladens eingeschaltet ist (Position 1).



Die Schutzfolie zwischen der Batterie und dem Kontakt bei der Fernbedienung entfernen.



Überprüfen, ob sich der Außenrollladen schließt.

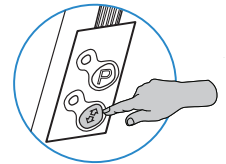


Überprüfen, ob sich der Außenrollladen öffnet.

Informationen zur Programmierung, Parameter - und Einstellungsänderung sowie über einzelne Funktionen finden Sie in der Programmieranleitung (Nr. NC97C).

Der Außenrollladen ist mit einer Taste für **Manuelle Steuerung** ausgestattet, die sich am oberen Teil des Außenrollladens befindet. Sie ermöglicht die **manuelle Steuerung** des Außenrollladens, wenn die Fernbedienung verloren geht oder die Batterien leer sind. Wenn sich der bereits eingebaute Außenrollladen mittels Fernbedienung nicht bedienen lässt, überprüfen Sie bitte, ob der Außenrollladen nach der Betätigung der Taste zur **manuellen Steuerung** funktioniert.

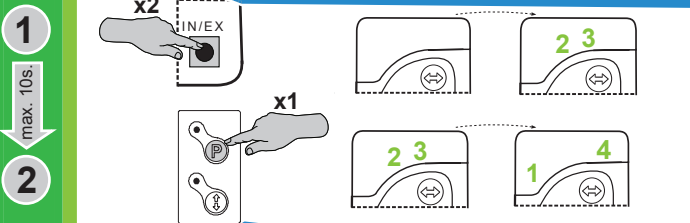
Falls der Außenrollladen nach der Betätigung der Taste Manuelle Steuerung funktioniert, aber auf die Betätigung der Fernbedienung-Tasten nicht reagiert, ist die **Reset-Funktion** und dann die **Programmierung** auszuführen.



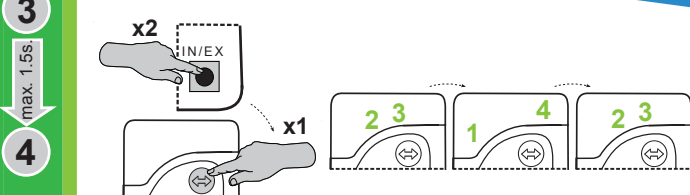
RESET

Signalisierung

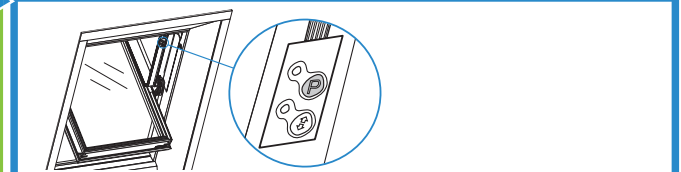
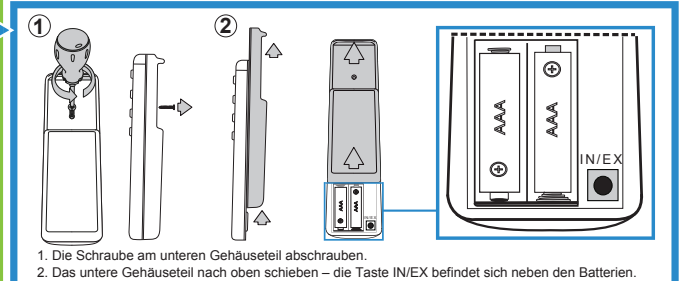
Reset des Außenrollladens



Reset der Fernbedienung

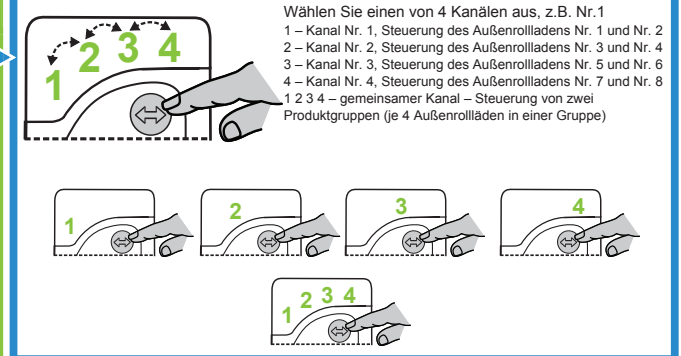
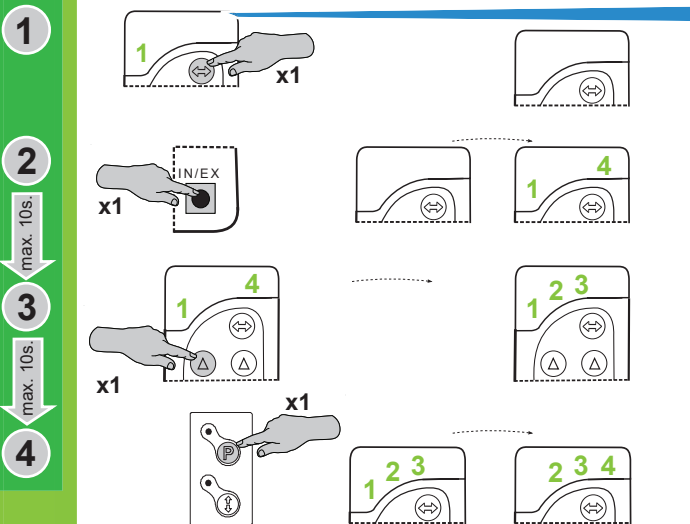


Zusätzliche Informationen

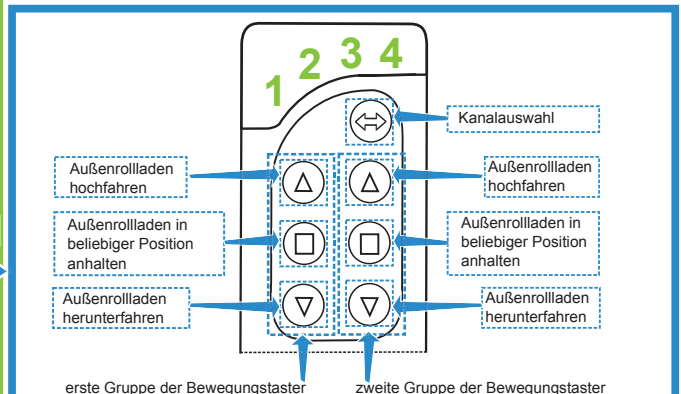
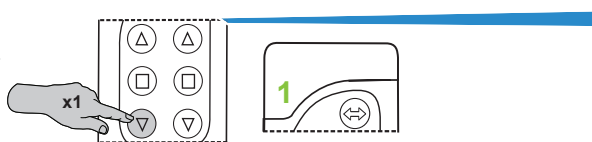


Programmierung

Signalisierung



Steuerung



Informationen zur Ausführung weiterer Programmier - Funktionen wie z.B. DELETE, EXCLUDE, LEARN MODE und VERBINDUNG VON GERÄTEN sind in der Programmieranleitung zu finden, die dem Außenrollladen ARZ Solar beiliegt. Die Informationen zur Ausführung der Programmier - Funktionen mit Hilfe von Z-Wave Fernbedienungen anderer Hersteller sind den Programmieranleitungen dieser Produkte zu entnehmen.